

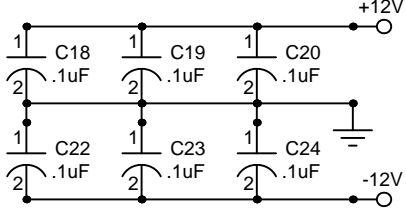
Notes

U1 can be any of these: LF442, LF412, LT1112, AD706
 MPF102 can be replaced with: 2N5457, J210 or PN4391
 All diodes are 1N914 or 1N4148
 A 2K metal film resistor can be used in place of PT146 (R24). However temperature drift will increase.

PT146 +3500 ppm/C
 Temp Comp Res.
 Precision Resistor Co.
 for optimal temperature
 compensation.

Mount in physical
 contact with heat
 sink compound or
 other temperature
 transferring material.

Bypass Caps



Sync Input

