

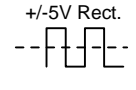
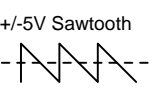
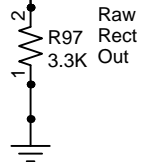
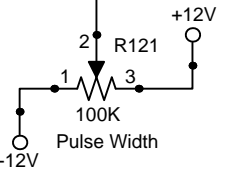
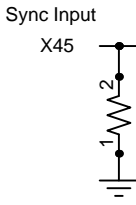
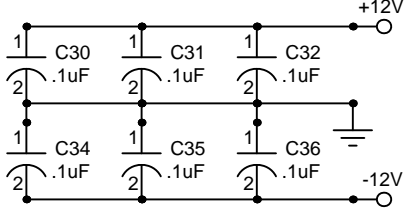
**Notes**

U1 can be any of these: LF442, LF412, LT1112, AD706  
 MPF102 can be replaced with: 2N5457, J210 or PN4391  
 All diodes are 1N914 or 1N4148  
 A 2K metal film resistor can be used in place of PT146 (R24). However temperature drift will increase.

PT146 +3500 ppm/C  
 Temp Comp Res.  
 Precision Resistor Co.  
 for optimal temperature compensation.

Mount in physical contact with heat sink compound or other temperature transferring material.

**Bypass Caps**



Raw Sawtooth Out

PWM Input