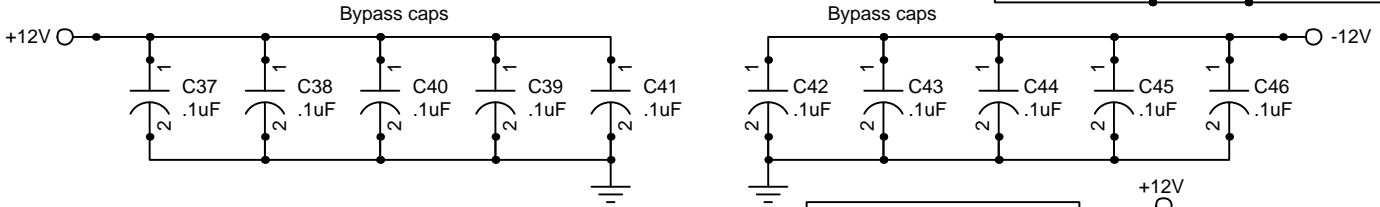
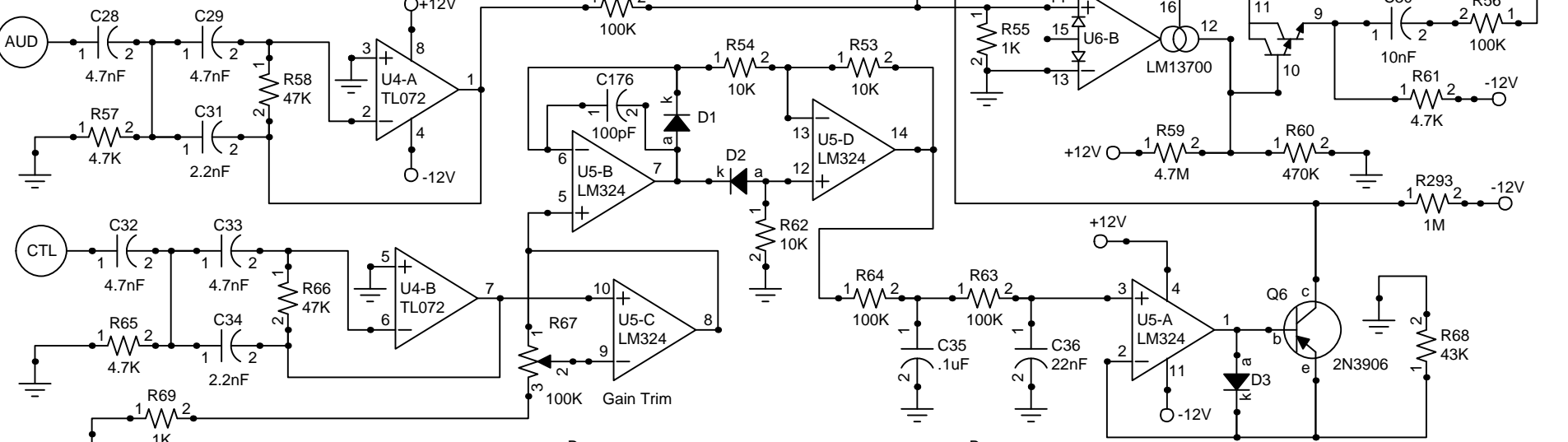




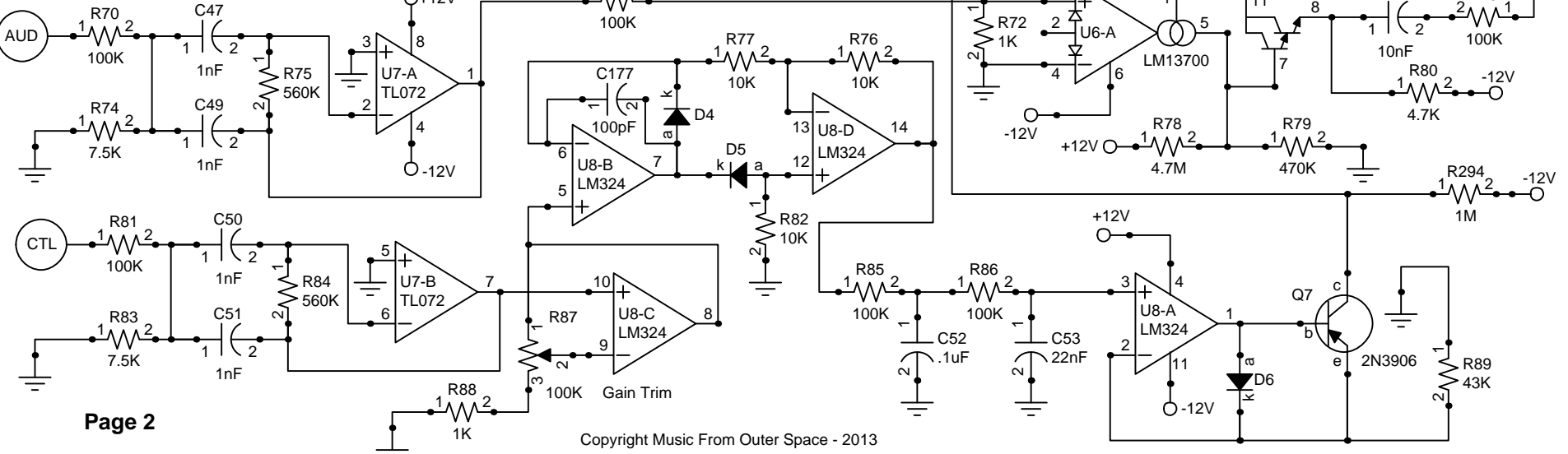
# MFOS 12 Channel Vocoder

Designed and Drawn by Ray Wilson

3330 Hz High-Pass,  $G = -2.13$ ,  $Q = .88$



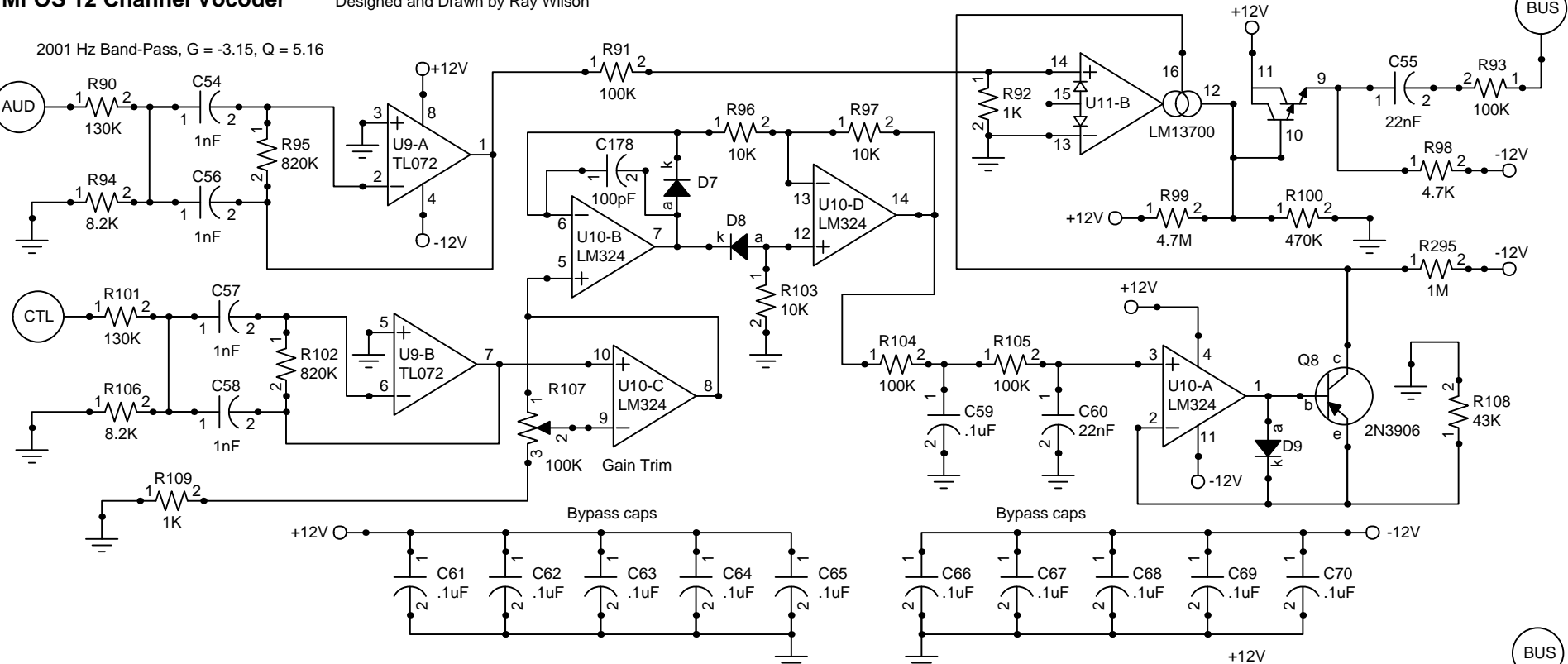
2546 Hz Band-Pass,  $G = -2.8$ ,  $Q = 4.48$



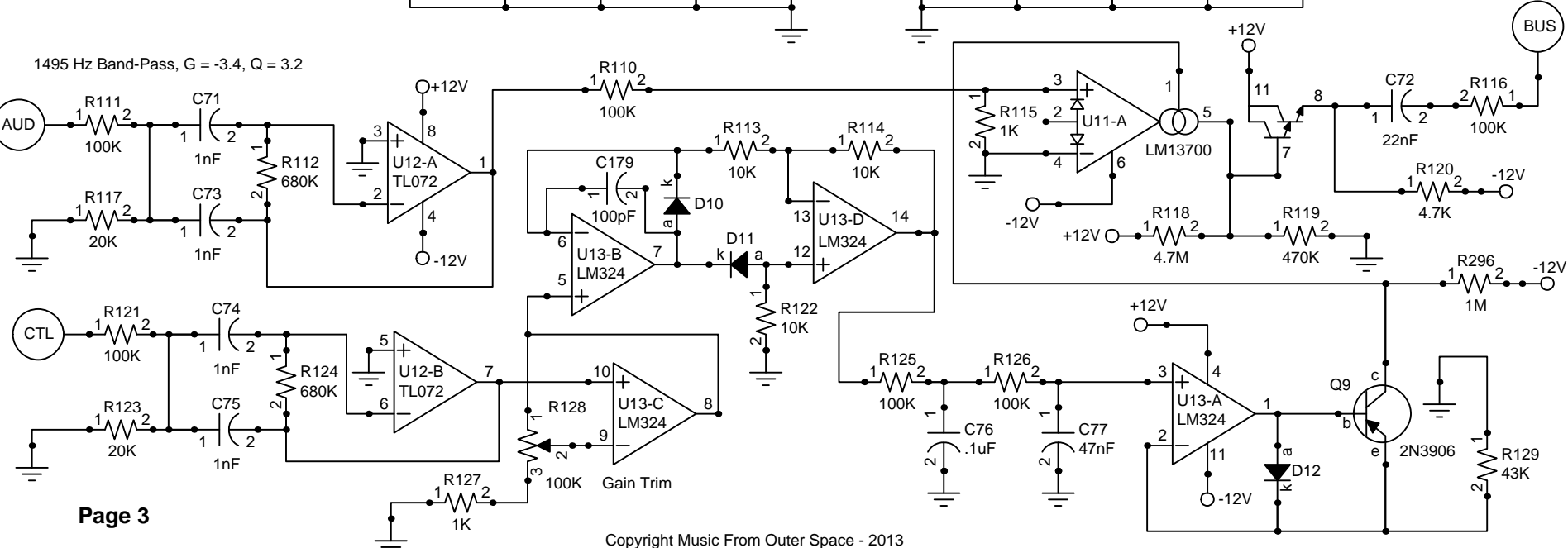
# MFOS 12 Channel Vocoder

Designed and Drawn by Ray Wilson

2001 Hz Band-Pass,  $G = -3.15$ ,  $Q = 5.16$



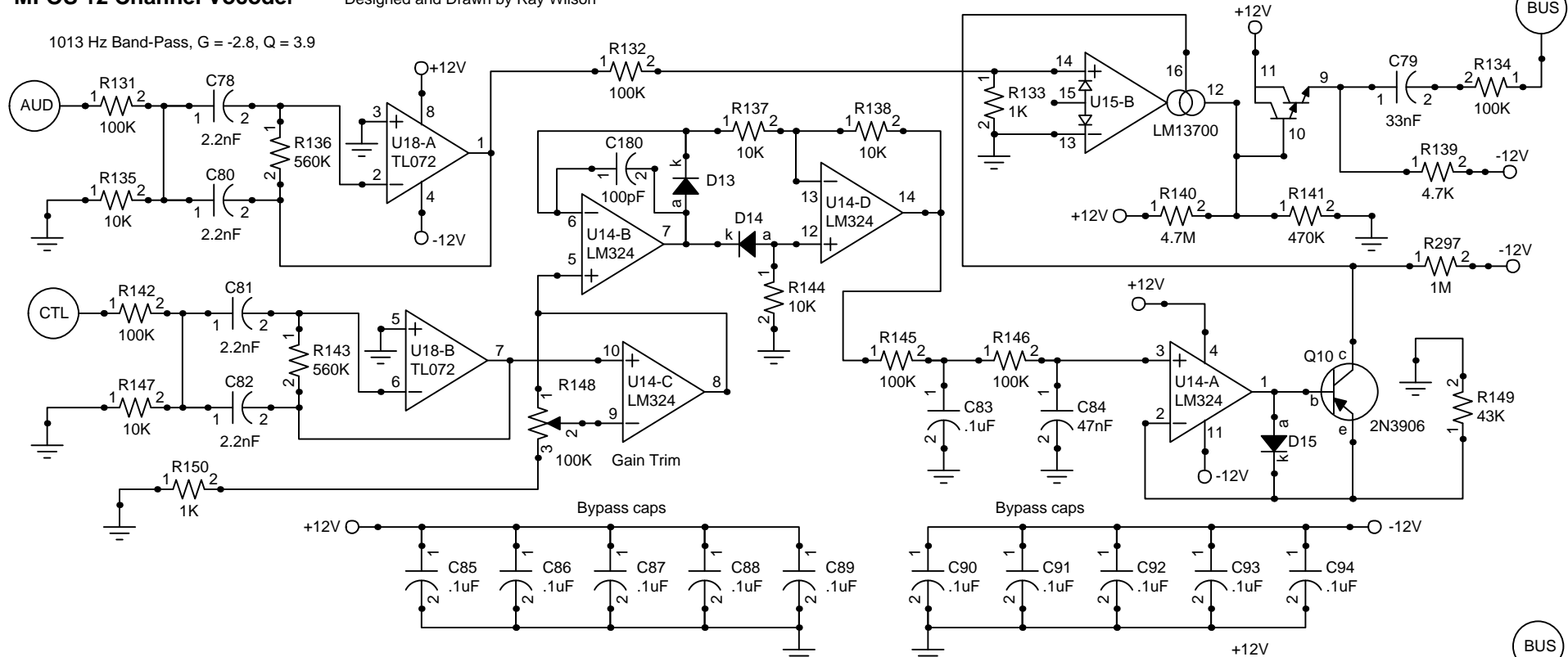
1495 Hz Band-Pass,  $G = -3.4$ ,  $Q = 3.2$



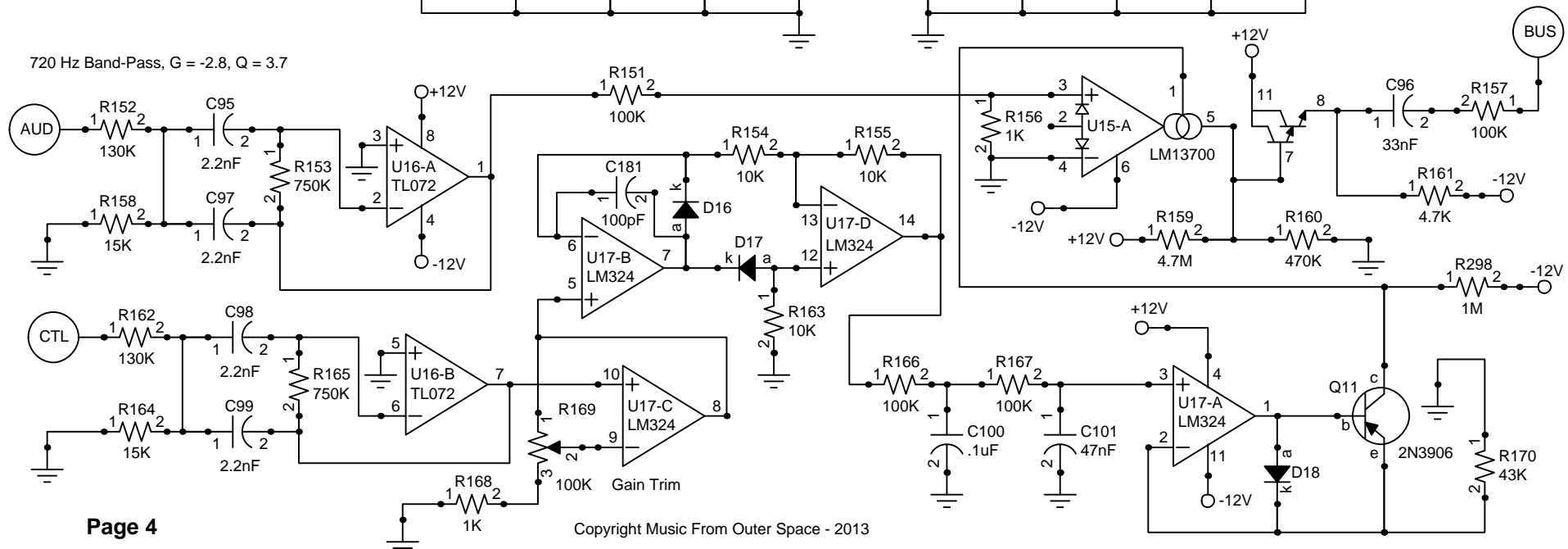
# MFOS 12 Channel Vocoder

Designed and Drawn by Ray Wilson

1013 Hz Band-Pass,  $G = -2.8$ ,  $Q = 3.9$



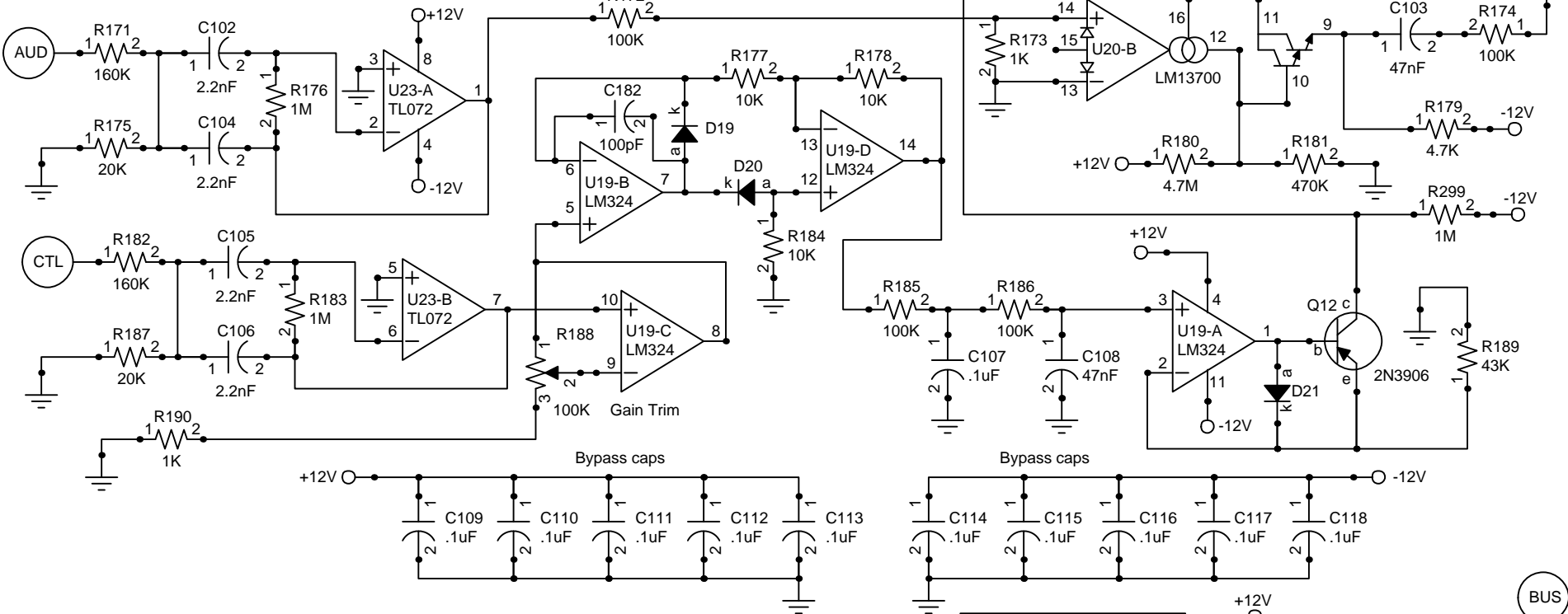
720 Hz Band-Pass,  $G = -2.8$ ,  $Q = 3.7$



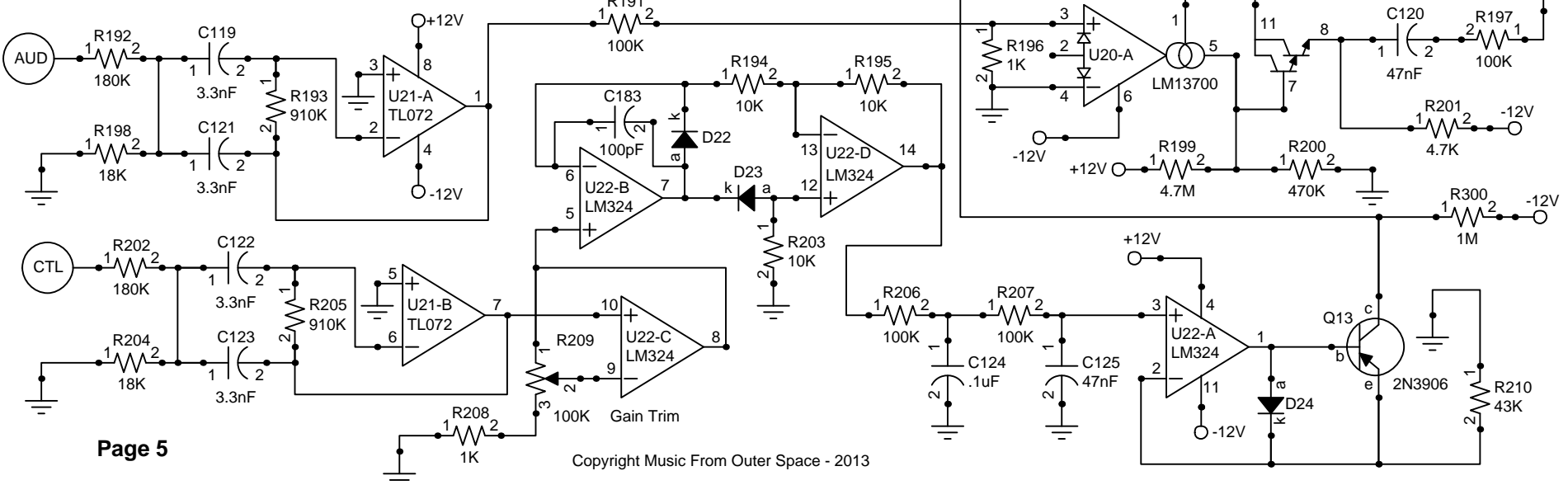
# MFOS 12 Channel Vocoder

Designed and Drawn by Ray Wilson

542 Hz Band-Pass,  $G = -3.12$ ,  $Q = 3.75$

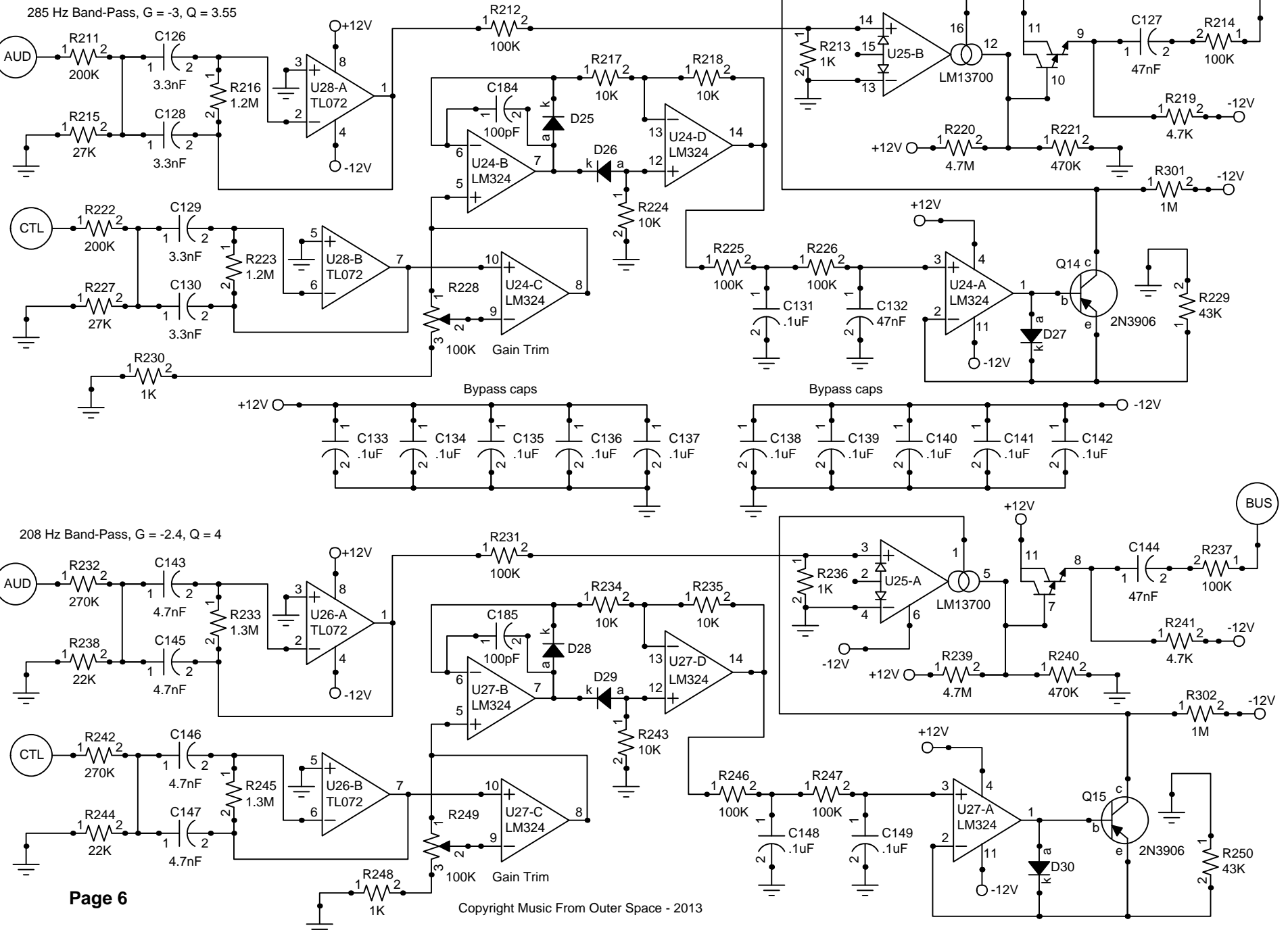


395 Hz Band-Pass,  $G = -2.5$ ,  $Q = 3.7$



# MFOS 12 Channel Vocoder

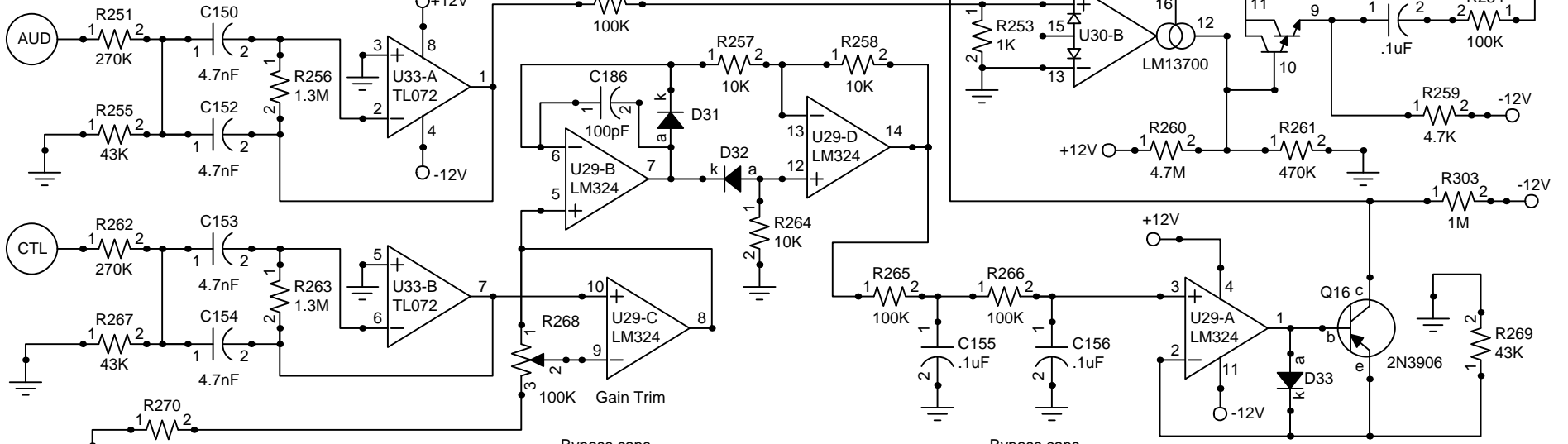
Designed and Drawn by Ray Wilson



# MFOS 12 Channel Vocoder

Designed and Drawn by Ray Wilson

154 Hz Band-Pass,  $G = -2.4$ ,  $Q = 2.96$



101 Hz Low-Pass,  $G = -2.55$ ,  $Q = 0.55$

